



2019 Annual Report

CELEBRATING
15 *Years*



INVESTORS
IN PEOPLE

Accredited
Until 2020

Registered with The Charity Commission for Northern Ireland NIC105005



Brigid Heaney, Pat McCullagh, Margaret Morgan, Hugh Rooney, Patricia McCullagh and SPACE CEO, Jacinta Linden, celebrating the EU Peace IV funded project “Social Soup” at Stormont in March 2019

Contents

- Introduction **Page 3**
- Celebrating 15 years **Page 4**
- Looking Back - Jacinta Linden CEO **Page 5**
- Looking Forward 2020 & Beyond
- Chairperson Eamonn Connolly **Page 6**
- Meet the Board **Page 7**
- Meet the SPACE team **Page 8**
- Our Wonderful Volunteers **Page 9**
- Our Services **Page 10**
- What We Did in 2019 **Page 11**
- What Changed **Page 12**
- Measuring our Social Impact **Page 13**
- Our Financials **Page 14**
- Social Enterprise at Space **Page 16**
- A BIG Thank You **Page 17**



Introduction

Welcome to **SPACE**. We are a not-for-profit association that have been delivering support services to parents, children and older people across the Newry and Mourne regions for fifteen years. Founded in 2004 and originally known as South Down Family Health Initiative we rebranded in 2014 and moved to Newry where we now have two offices. Our services are guided by a core set of values that describe how we work with all our stakeholders. Our values are at the heart of all that we do.

In the summary of a study carried out in 2019 to measure the impact of SPACE it was noted that:

“One of the many strengths of SPACE is that they are person centric – they consider the entire person and ensure the support they are providing is the best option. The family are consulted when creating a programme and/or determining the appropriate services. They do not determine the programme in isolation. The family are heavily involved and this ensures they are bought in and supports making real change. SPACE focus on the wider family not only the children. Often this will lead to long term changes versus short term. They are changing the environment and dynamic within these families for the better. SPACE staff are to be commended as they go above and beyond” – this feedback came from parents, young people and agencies.

Mission

To work alongside individuals, families and the community, to support improved opportunity, & health and wellbeing

Big Themes

Our big themes for the next five years will focus on supporting those **disconnected** through

- Disability
- Poverty
- Learning Disability
- Caring
- Bullying
- Mental Health
- Health Inequalities

We will work to support you, using a strengths-based approach, building resilience and linking and connecting individuals, and communities

Vision

A connected community where everyone has access to services and opportunities, enabling them to reach their full potential

Our Values...we care



Committed



Alongside



Respectful

Excellence

CELEBRATING
15 Years



Looking Back Jacinta Linden CEO



When Space started in back in 2004, there was no funding, strategic plan, or staff, just a will and a vision to create opportunities for people to thrive. Over the years we have helped countless children, parents, older people and young adults with additional needs. Throughout the 15 years we have met some great characters, enjoyed the company of inspiring volunteers and had the privilege of working with some bad ass and truly inspiring women! Yip we are still trying to recruit our first male worker after 15 years of growing!

We have worked alongside families across some of the most vulnerable and tender areas of family life, and we have been privy to joy, pain and crisis. We have witnessed huge bravery, watched as people took responsibility to thrive and succeed and we have been truly privileged to share part of that journey with you. We have tried hard to get the message out that working alongside people within their communities will create more strength and resilience than doing things for or to people. We don't need more bureaucracy; we don't need more hoops for people to jump through, we just need people to be able to access the help required when they need it.

Creating and building a modern charity has been a work of love and challenge. In every walk of life, we face the opportunity to take the lead: to set a new direction, to inspire others to follow us and to make change happen. I've been incredibly lucky to have found great colleagues, volunteers and board members to make this happen. We have a diverse workforce of paid staff and volunteers, some of whom have highly personal motivations for engaging with our work. Alongside our volunteers and workforce, we must continuously strive for business improvement and innovation as there is no guarantee of income or finding success in building a sustainable business. Looking back over 15 years, I'm humbled by all of the people who have joined us on our journey, some for a reason, some for a season and others for life.

Each day I open the door to work I'm reminded of just how much need there is, I love the smile of satisfaction from our candle makers, I love the joy when we get an order for a candle club and I love hearing how our staff and volunteers are impacting on those most at risk within our community. I'm committed to Space being around for as long as needed to keep on advocating and agitating (sometimes) for change! We need to do all we can to ensure our communities develop resilience, overcome adversity and reach for the stars. Here's to Space being part of that journey over the next 15 years.

Looking forward 2020 and beyond Eamonn Connolly Chairperson



Whilst the landscape of NI has changed for the good over the last 15 years, many people are still unclear about what the work of a modern charity involves and indeed what the third sector does. Going forward it will become increasingly important to establish a clear understanding of what the third sector is - who we are and what we do. The third sector is made up of such a diverse range of organisations, ranging from small one or two person-operated local groups to large multinational charities that it can often be challenging to establish exactly what the third sector is and does.

The Third sector is an exemplar, "It is a major employer; a leader in terms of flexible working practices, talent, research and innovation; and provides, and often replaces, services which the private sector refuses to or are incapable of providing, and those which the public sector can no longer effectively provide due to budget cuts and resource constraints" (<https://scvo.org.uk/post/2019/04/02/towards-2021-the-future-of-scotlands-third-sector>).

Third sector organisations do not operate in a vacuum; we work in collaboration with a wide range of stakeholders and partners. Over the last 15 years we have come to realise many partnerships develop in a linear fashion, however it is the partner's ability to minimise gaps and maximise opportunity that contributes most to effectiveness and sustainability. We have been blessed to build collaborative partnerships with statutory, private and community sector organisations. We have worked together to harness resources, skills and deliverables whilst meeting competing and contrasting goals. It is the power of collaboration and transparency to focus on better outcomes for our children, older people and those most in need that has helped Space to provide the best outcome for all concerned.

There are unique challenges to running a charity; we have a diverse workforce of paid staff and volunteers, some of whom have highly personal motivations for engaging with our work. Alongside our volunteers and workforce, we must continuously strive for business improvement and innovation as there is no guarantee of income or finding success in building a sustainable business.

Meet the Board

Eamonn Connolly

Martina Flynn

Julie White

Paul Farquhar

Paul Slevin

Judith McConville

Gerry Flynn

Connor Sweeney

The Space board is representative of the community we support. Our board has evolved with the organisation with some members having been beneficiaries of our services. Others joined the board after a public recruitment appeal for professional support skills including accountancy, law, finance and human resources.



Meet the Teams



Support Team

Kate
Noreen
Gemma
Cailin
Jena



Kilkeel Surestart Team

Rita
Pauline
Annamarie
Kerri



Programmes / Training and Admin Team

Joanne
Tracy
Aine
Kathy



Management Team

Pauline
Jacinta
Allison

Our Wonderful Volunteers

Like most charities, Space would not be able to deliver the vital services we do without volunteers. We have a fabulous team who range in age from 15-70 and do everything from selling candles, upcycling furniture, offering practical support to families in their own homes, driving people to hospital, supporting staff at events and summer schemes and just being there when we need them. Some of our volunteers have been with us since we first began and others come for short periods of time but we value them all and consider them all to be part of the SPACE family.



In 2019 volunteers provided 4000 hours of support! Equating to a financial contribution of £60,000.



“**Anne McArdle**
- Volunteer Driver on
Home2Hospital Project”

Our Services



Family Support

Co-ordination of the Newry & Mourne Family Support HUB

Kilkeel Surestart

Evidence Based Parenting Programmes - Incredible Years and Parents Plus Adolescents

Signposting to additional supports including access to grants and financial support

1:1 Home-based practical Family Support

Early Intervention Family Support Service

WHO endorsed resilience programmes for children - Fun Friends and Friends for Life



Disability

Home-based support to parents and siblings to children with a disability

Skills training through our Social Enterprise

Social Enterprise opportunities for young adults with disabilities



Health Inequalities

Home to Hospital

Joining the Dots Networking Events

Elevate Mentoring Project

Social Opportunities for Older People

What We Did In 2019



Disability

- Young people with learning disabilities received **17,250** hours of skills training through our social enterprise
- **12** teenagers with additional needs enjoyed **288** hours of support in our Connections programme
- **42** families with a child with additional needs received **1176** hours of home-based practical support



Poverty

- Social Enterprise opportunities for young adults with disabilities



Parenting

- **608** families benefited from **21,280** hours of home-based support
- In 2019 Space was deemed the appropriate support for **57%** of families referred into the Newry and Mourne Family Support Hub
- **579** group activity sessions were enjoyed by children
- **142** children enjoyed 4 weeks of summer scheme



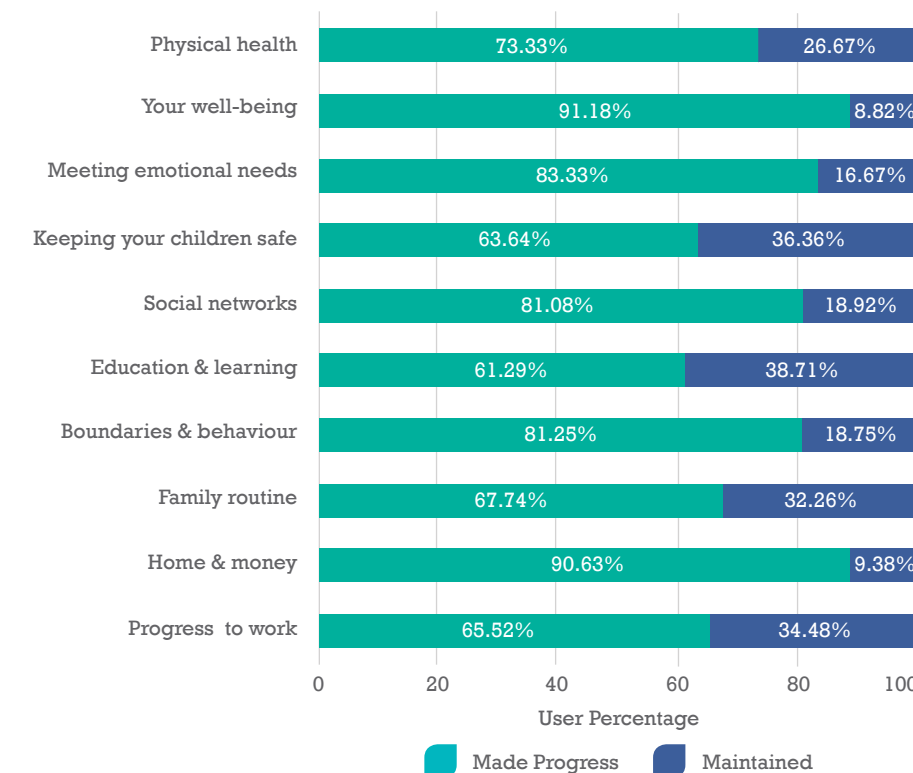
Health Inequalities

- **1800** volunteer hours providing **370** trips to hospital for older people
- **200** people participated in Joining the Dots Networking Events
- **185** older people enjoyed over **4000** hours of social activities
- **5** community groups received **50** hours of mentoring through Elevate Project

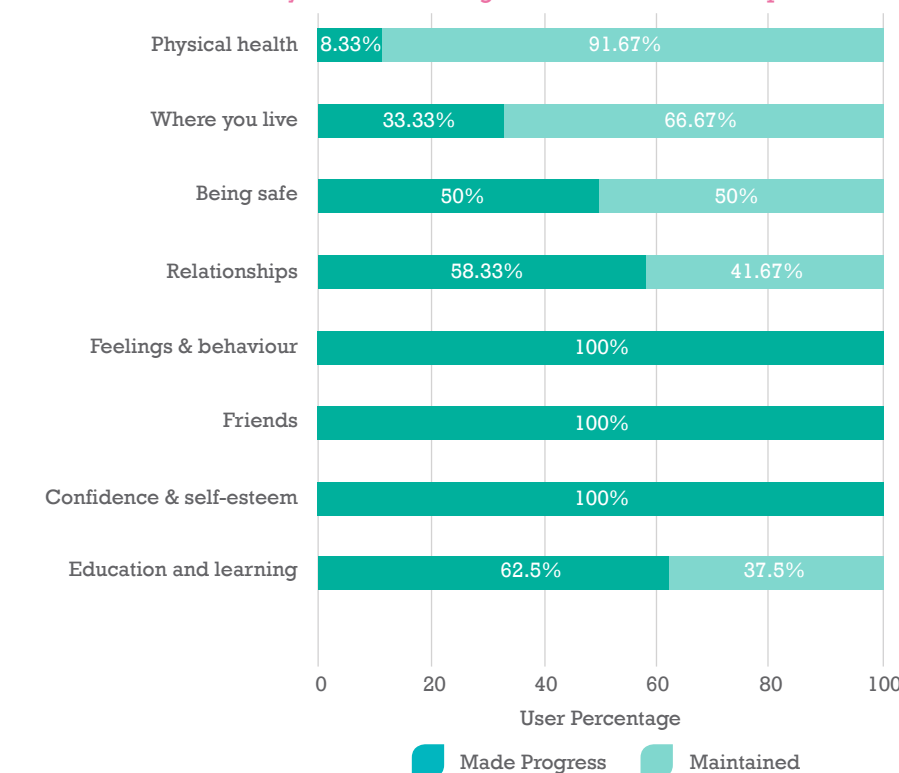
What Changed

At **SPACE** we measure the impact of our work with children and families using Outcome Star. The Outcome Star is a family of evidence-based tools that measure and support change when working with people. It is a unique and innovative way for frontline services to demonstrate their impact whilst influencing and improving keywork. We use Family Star Plus for working with families and My Star when working directly with children.

The Family Star report shows us the progress that families made in the following areas while supported by SPACE staff.



The My Star report shows that 100% of children who received support from us reported that they were more confident, felt it was easier to make friends and that they felt their feelings and behaviour had improved.



Measuring Our Social Value

In 2019 SPACE commissioned independent company, JAKNA Consultancy, to carry out a Social Return on Investment (SROI) study on the work we delivered through the National Lottery funded SPACE 1 Family Support project

What is SROI?

SROI tells the story of how organisations create change by measuring social, environmental and economic outcomes and uses monetary values to represent them.

Why do we need SROI?

- Measure and understand the social value we created.
- Confirm that we are delivering change.
- Putting social impact into the language of 'return on investment'.
- To measure value for money.
- To ensure that we are using our resources to best effect.

How does it work?

The social value of transformation is quantified by:

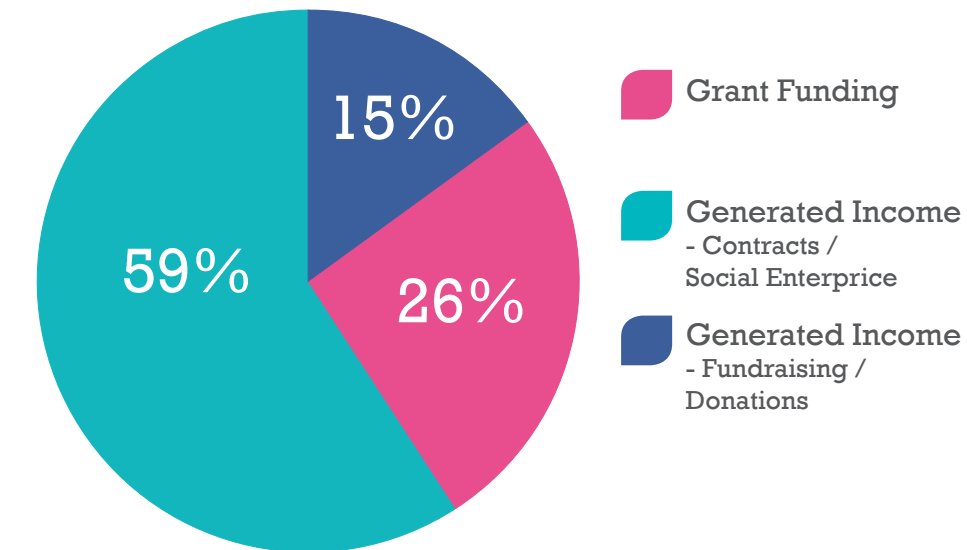
- Identifying the main stakeholders that experience the most significant changes as a result of our work.
- Asking stakeholders about the changes.
- Establishing evidence of the changes, by establishing evidence of change and applying financial proxies to the changes a monetary value is calculated. For every £1 that the National Lottery Community Fund invested in SPACE we generated £16.40 in social impact.



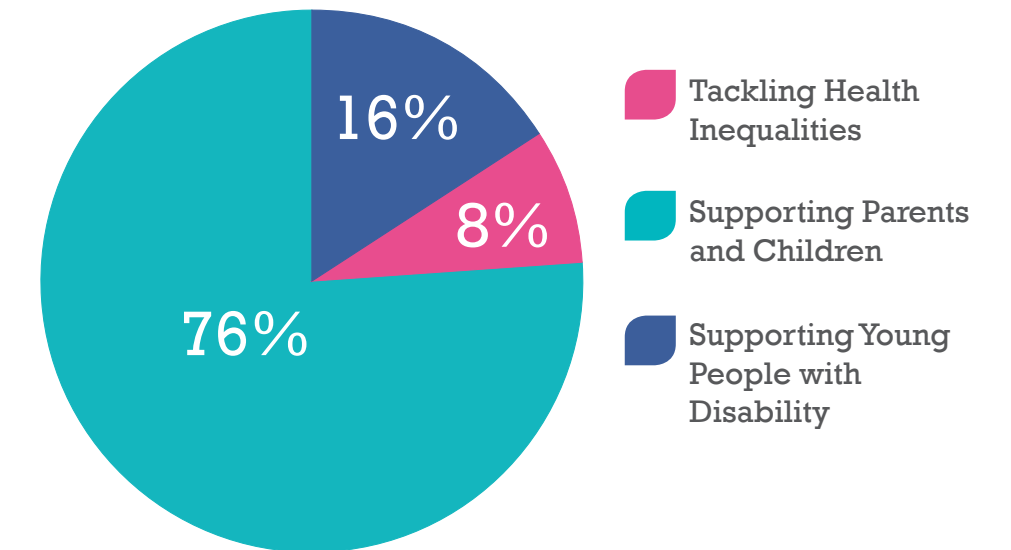
Our Financials

Our income is a cocktail of grants, contracts, social enterprise and fundraising activities.

Where Our Money Comes From



How We Spend Our Money



“Before SPACE came into our lives I would have been standing in the kitchen at night preparing dinner and all I could hear was them fighting screaming and crying at each other. Now when I make the dinner I can hear laughter and giggles and I can't explain how good a feeling that is.”



Nikita Fegan, one of the Acorn Candle Makers

Social Enterprise at Space



"Volunteer Lisa McNulty presenting an ACORN candle to Secretary of State, Julian Smith, during his visit to Space in 2019"

A social enterprise is a company that's core mission is to benefit and improve society. However, unlike a charity it is still a business that runs and grows independently to make profit, doing good business whilst doing good.

Our social enterprise, The Good Space, supports young people with intellectual, emotional and learning difficulties in a creative and safe work environment to produce a range of high-quality hand poured Soy wax candles and bespoke upcycled hand painted furniture. Each candle contains a unique code which when input to our website will tell you all about the person who made your candle and anyone calling into our Monaghan Street premises will meet our fabulous team of upcyclers and candle-makers. In November 2019 right in the heat of the Brexit discussions, we were delighted to welcome the Right Honorable Julian Smith MP as Secretary of State to Northern Ireland to a round table discussion on the impact of Brexit on our community. We found the SoS for NI to be a willing listener and a keen advocate for community. We were delighted with the time and attention afforded to our volunteers during his visit. We were genuinely sorry to hear of his departure from the post in

2020. Good luck Julian, we wish you every success in 2020 and beyond.

2019 saw Acorn Candle sales flourish and for the first-time customers were able to buy our candles from a well-known pharmacy chain. Our candle-makers had to learn about bar-coding and packing for commercial sales and it was a very proud day for them when the first pallet of candles left for distribution across Northern Ireland. November saw the introduction of the Acorn Candle Clubs. Samples were left in staff canteens and receptions of several local businesses and staff were able to pick and choose their favourites and have them delivered directly to their workplace. These proved very popular in December when our candle makers poured, packaged and delivered over two thousand candles.

A Big SPACE Thank You To All Those Who Help Us Do The Job We Love

As a not for profit community-based organisation, we rely on the support of funders, volunteers, advocates, support organisations and donors to support us in our work. We are very grateful to the general public and local businesses whose continued goodwill and support enabled us to continue helping local families through tough times over the past 15 years. Thank you.

Volunteers

Tim, Timmy, Gary and Gary, Hugh, Glen, Martin, Lisa, Donna, Gemma, Olivia, Stephen, Clare, Gabriel, Sinead, Mary, Phyllis, Ciara, Jennifer, Maria, Anne, Denise, Mervyn, Peter, Trevor, Bob, Monica, Annie, Patricia, Tia, Michelle, Amy and Amy, Megan, Rebekah, Louise, Joanne, Bara and Hannah.

Other Supporters

David Meade, Newry BID, Kerri Morrow NM&DDC, Darren Curtis and Valerie Maxwell CYPSP, Ailbhe Hickey & Loma Wilson NIHE, Ingrid Perry, Brian Quinn, Bank of Ireland Newry, Newry City Runners, Newry Credit Union, Sainsbury's Newry, Intertrade Ireland.



Annie McCrory, enjoying the Christmas Show at the end of Friends for Life Programme.

In 2019 our services were funded by:



**NATIONAL
LOTTERY FUNDED**



Comhairle Ceantair
an Iúir, Mhúrn agus an Dúin
Newry, Mourne and Down
District Council



Southern Health
and Social Care Trust



Early Intervention
Transformation Programme



Public Health
Agency



Northern Ireland
Housing Executive

Peace
Northern Ireland - Ireland
European Regional Development Fund

Sainsbury's

SPACE

24 Monaghan Street, Newry
BT35 6AA

T: 028 3083 5764

E: info@space-ni.com

The Good SPACE

5-7 Marcus Street, Newry
BT34 1ET

T: 028 3025 2288

E: thegoodspace@space-ni.com

Kilkeel SureStart

18 Newcastle Street, Kilkeel
BT34 4AF

T: 028 4176 4718

E: info@space-ni.com



Spaceni



@SpaceNI15